



Loveland
AGRI PRODUCTS™

Trial Data

Foundation LM - Wheat

Temora, NSW

Trial Setup

- Fully randomised & replicated plot work - 10 replicates
- Plot size = 20m X 1.76m

Planting date: *08/05/2014*

Site: *Temora, NSW*

Variety: *Suntop @ 60kg/ha*

GSP: *Agrichem APP @ 20L/ha*

© 2020 Loveland Agri Products. Always read and follow label directions.
Foundation LM is a registered trademark of Loveland Agri Products.

Trial Protocol

Treatment	Rate/ ha	Timing
Nil Fertiliser	-	-
Agrichem APP (GSP)	20L	Planting
GSP + Foundation LM	20L + 5L	Planting

© 2020 Loveland Agri Products. Always read and follow label directions.
Foundation LM is a registered trademark of Loveland Agri Products.

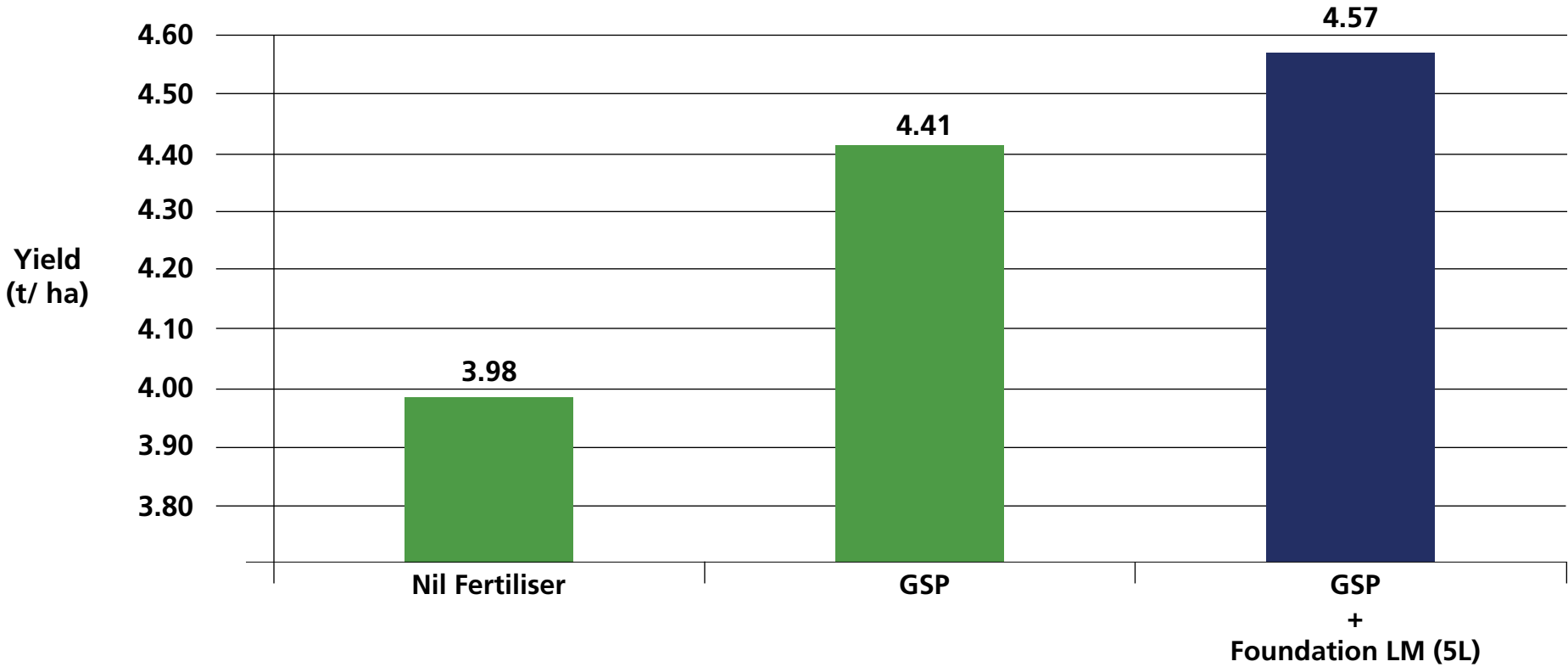
Wheat Yield - t/ ha

Treatment	Rate/ ha	Timing	Yield t/ ha	Protein %
Nil fertiliser	-	-	3.98	12.6
Agrichem APP (GSP)	20L	Planting	4.41	12.7
GSP + Foundation LM	20L + 5L	Planting	4.57	12.4

LSD (P=.05) = 0.070 CV = 2.09

© 2020 Loveland Agri Products. Always read and follow label directions.
Foundation LM is a registered trademark of Loveland Agri Products.

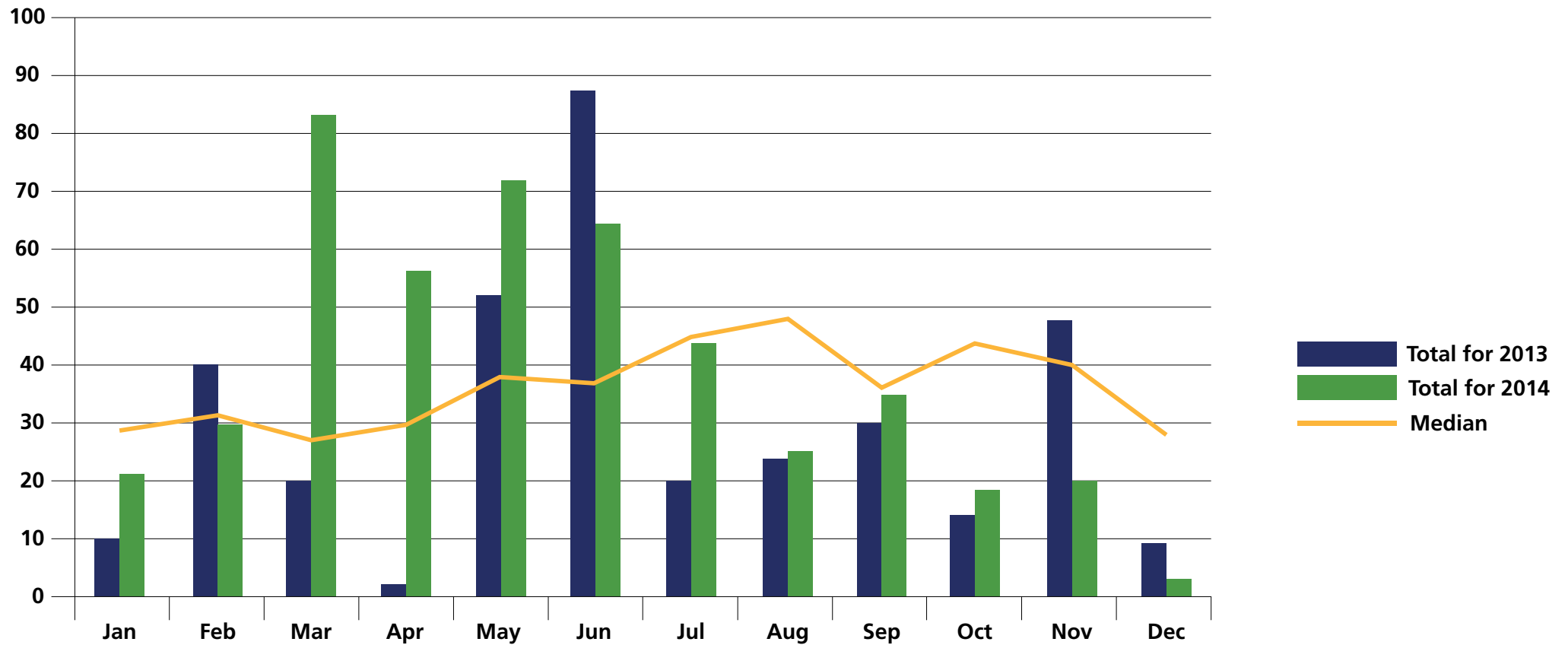
Wheat Yield - t/ ha



LSD (P=.05) = 0.070 CV = 2.09

© 2020 Loveland Agri Products. Always read and follow label directions. Foundation LM is a registered trademark of Loveland Agri Products.

Temora - Rainfall (mm)



© 2020 Loveland Agri Products. Always read and follow label directions.
Foundation LM is a registered trademark of Loveland Agri Products.

Conclusions

- Trial sown via plot seeder with liquid injected 15mm below the seed with a total volume of 100L/ ha applied with each treatment
- Nil fertiliser was the best treatment at emergence. This occurrence was short lived with fertiliser treatments quickly overtaking it
- As the trial progressed, 5L/ ha of Foundation LM + GSP appeared the best and this was reflected in the final yields
- No significant differences for protein %